






Forstliches Betriebsgutachten (PSG)

Waldbesitz Lanners




Karte der geplanten Wege

Situation: 2009

geplante Wege

-  neuer Rückweg
-  zu befahrbarem Weg ausbauen
-  neuer befahrbarer Weg
-  Erneuerung des Belags
-  Wendeplatz

Besitz

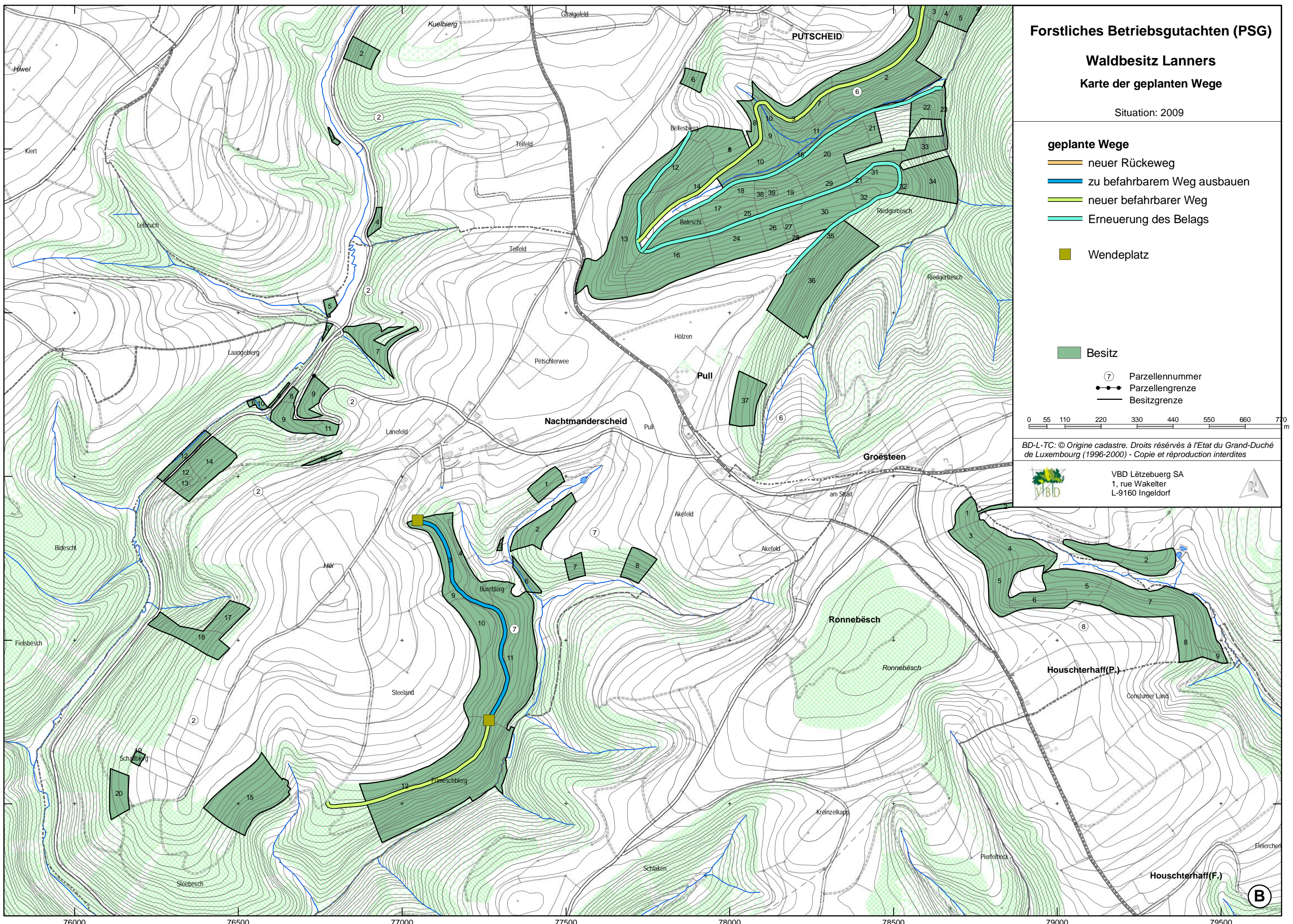
-  Parzellennummer
-  Parzellengrenze
-  Besitzgrenze



BD-L-TC: © Origine cadastre. Droits réservés à l'Etat du Grand-Duché de Luxembourg (1996-2000) - Copie et reproduction interdites



VBD Lëtzebuerg SA
1, rue Wakelter
L-9160 Ingeldorf



B