


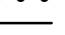

Forstliches Betriebsgutachten (PSG)

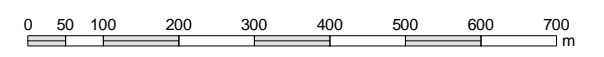
Waldbesitz Lanners

Bestandskarte

Situation: 2009

-  Buchen 1 - 40
-  Buchen 41 - 100
-  Buchen 100 +
-  Eichen 1 - 40
-  Eichen 41 - 100
-  Fichten/Douglasien/Tannen 1 - 20
-  Fichten/Douglasien/Tannen 21 - 60
-  Fichten/Douglasien/Tannen 61 +
-  Kiefern/Lärchen 21 - 80
-  Verschiedene Laubbölder
-  Landwirtschaftsflächen
-  Niederwald
-  Niederwald in Überführung
-  Ödland, Brachland

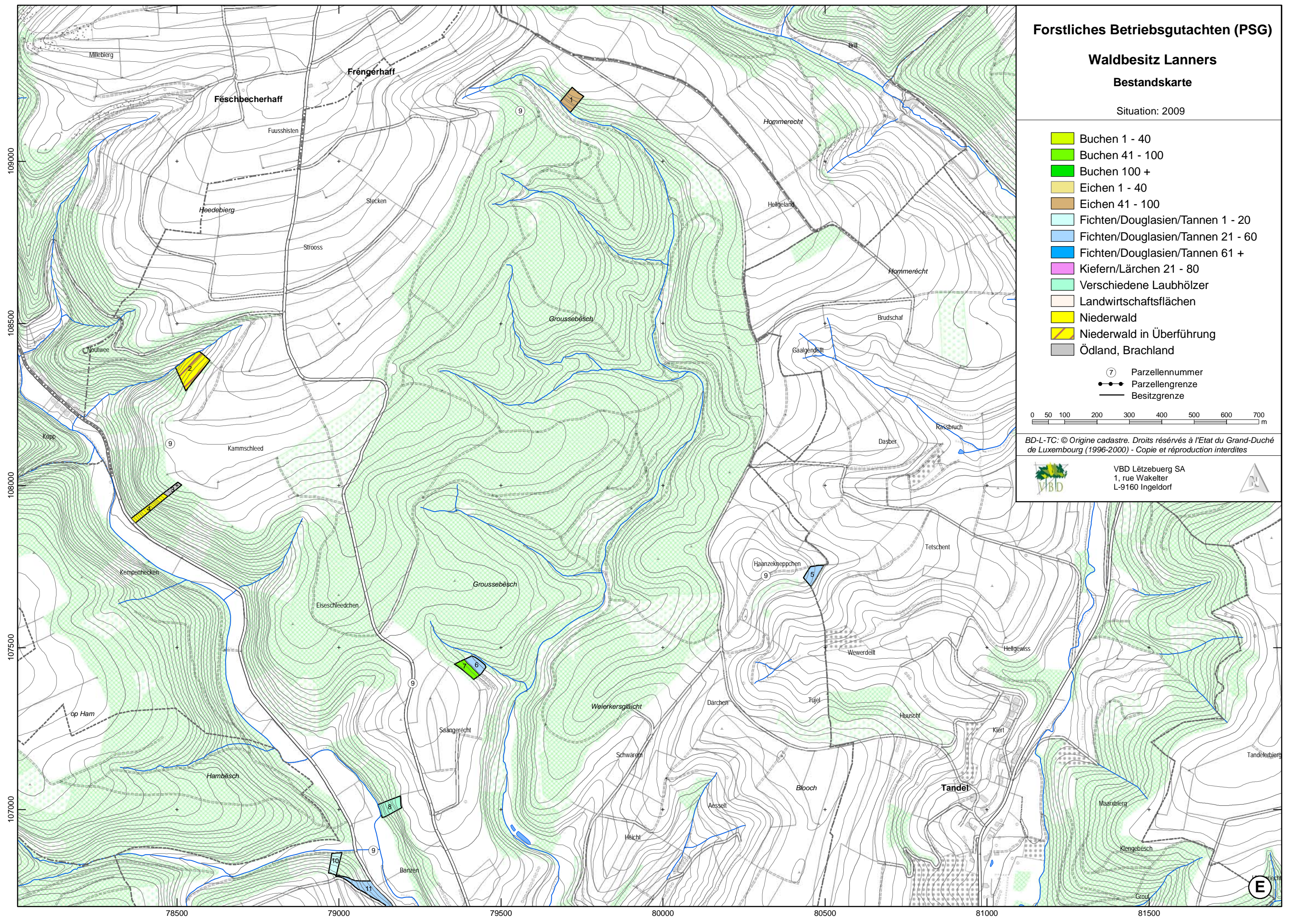
-  Parzellennummer
-  Parzellengrenze
-  Besitzgrenze



BD-L-TC: © Origine cadastre. Droits réservés à l'Etat du Grand-Duché de Luxembourg (1996-2000) - Copie et reproduction interdites



VBD Lëtzebuerg SA
1, rue Wakelter
L-9160 Ingeldorf



109000
108500
108000
107500
107000

78500 79000 79500 80000 80500 81000 81500

